



JRB ART
AT THE ELMS
Pasco Arts District

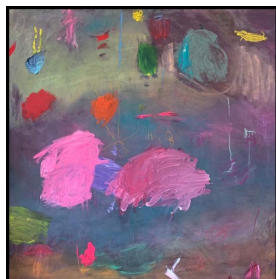
THURSDAY, FRIDAY & SATURDAY OPENING - Continuum: The Indefinite Progress of Existence



Denise Duong, "Another Self," 2020, Mixed Media on Canvas, 48 x 36 in.

EXHIBITION VIEWING OPPORTUNITY! We will be featuring the work Denise Duong, Gabriel Friedman, and Rebecca Wheeler in our current exhibition, "Continuum: The Indefinite Progress of Existence." Instead of having our typical First Friday Opening Reception, we are offering sign up opportunities to see this extraordinary exhibition on Thursday, Sept. 3rd, Friday, Sept. 4th, and Saturday, Sept. 5th from 11:00 am to 6:00 pm!

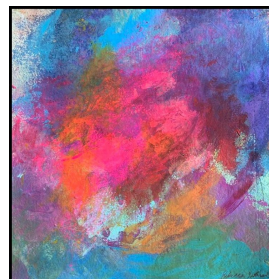
SIGN UP



Rebecca Wheeler, "Untitled 1,"
2020, Acrylic on Canvas,
36 x 36 in.



Rebecca Wheeler, "Early Cave
Deer," 2020, Gouache on
Watercolor Paper, 12 x 12 in.



Rebecca Wheeler, "Artist Paint
Palette 4," 2020, Gouache on
Watercolor Paper, 12 x 12 in.,

2810 N Walker Ave | jrbartgallery.com | 405.528.6336

